

Windows 8 - MVX Printer Driver Installation

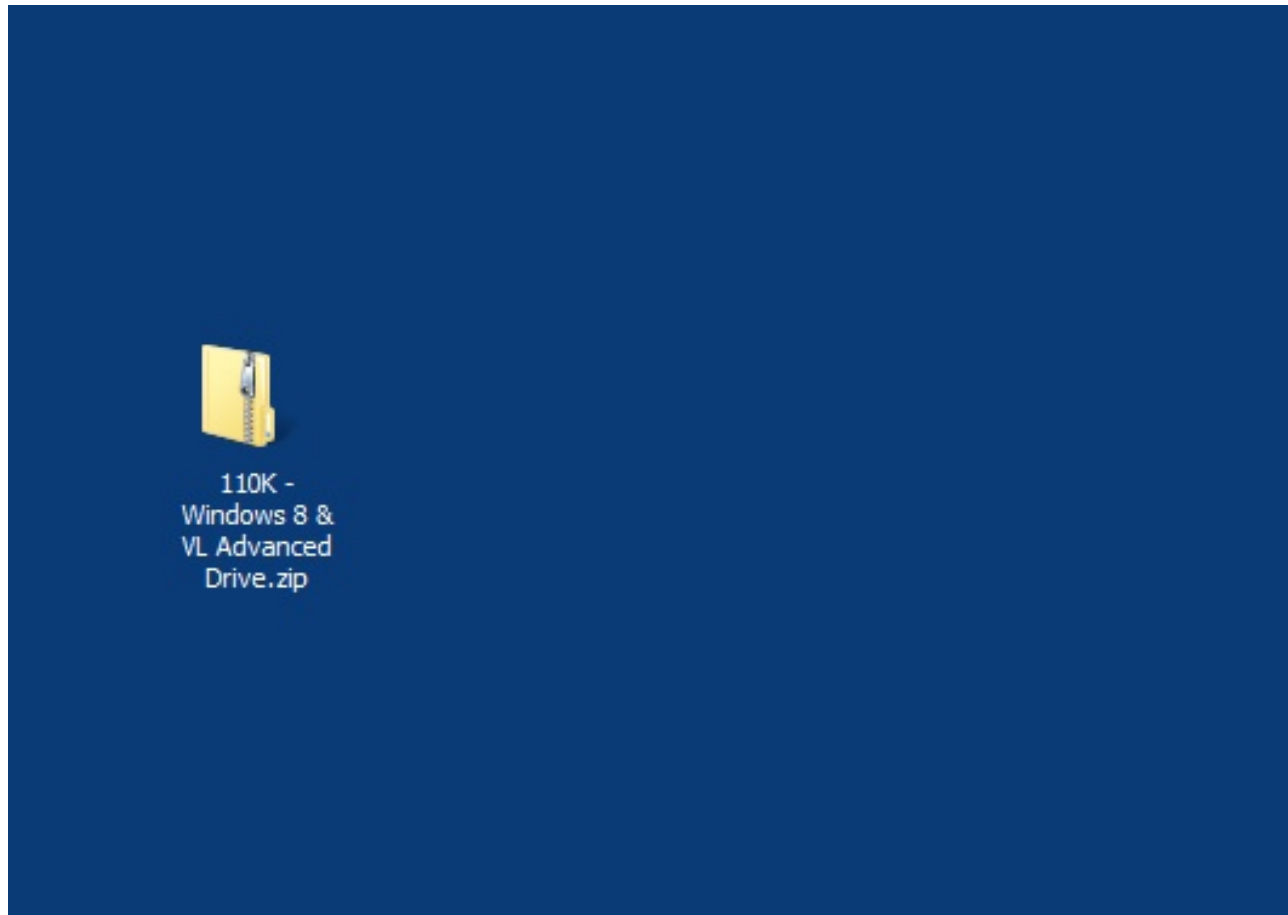
READ FIRST!

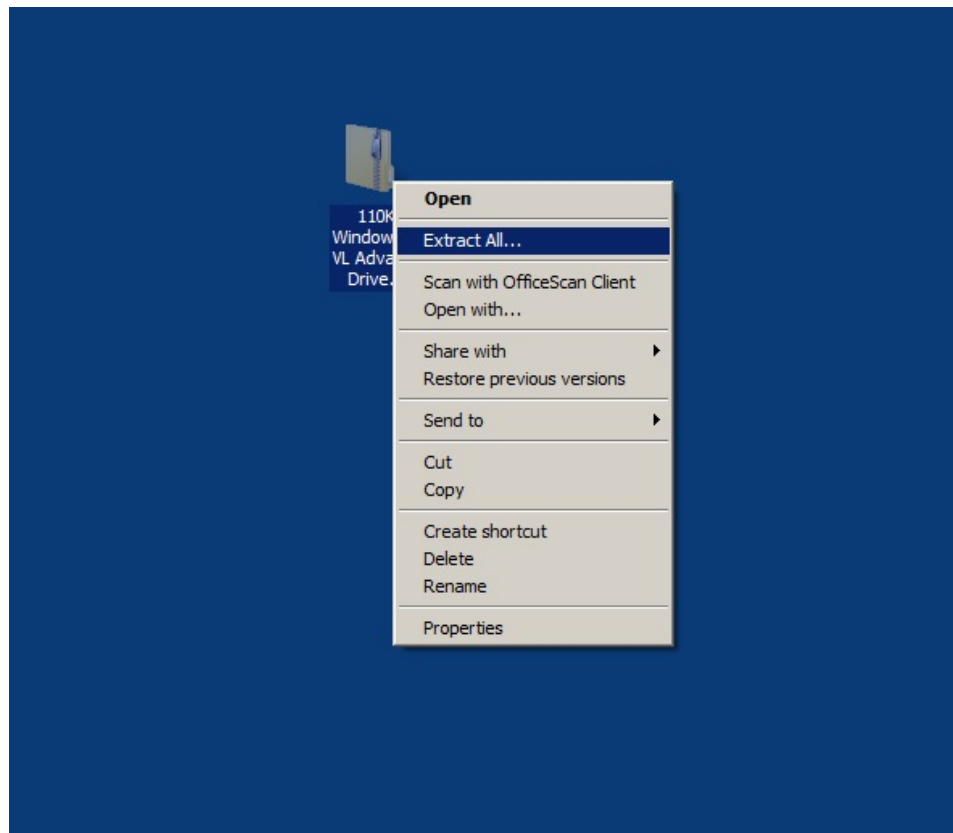
This document assumes you have already downloaded the driver installer ZIP package from either the Universal Laser Systems website or Universal Laser Systems FTP site.

For ease of explanation, I have selected V Class as the engraver to install the driver onto a Windows 8 computer. You will need to ensure that you select the same model in the driver as what the engraver displays when it boots up – failure to use the correct driver will result in a driver conflict error.

As of February 2014, Windows 8.1 requires a patch be downloaded from the Microsoft website prior to installing the printer driver. This patch is not required for Windows 8.0 – it is only required for computers that are running Windows 8.1. If you are running Windows 8.1, go the Microsoft website – www.microsoft.com – and download the **KB2911106** patch. You can also download the **KB2911106** patch through Windows Update on your computer.

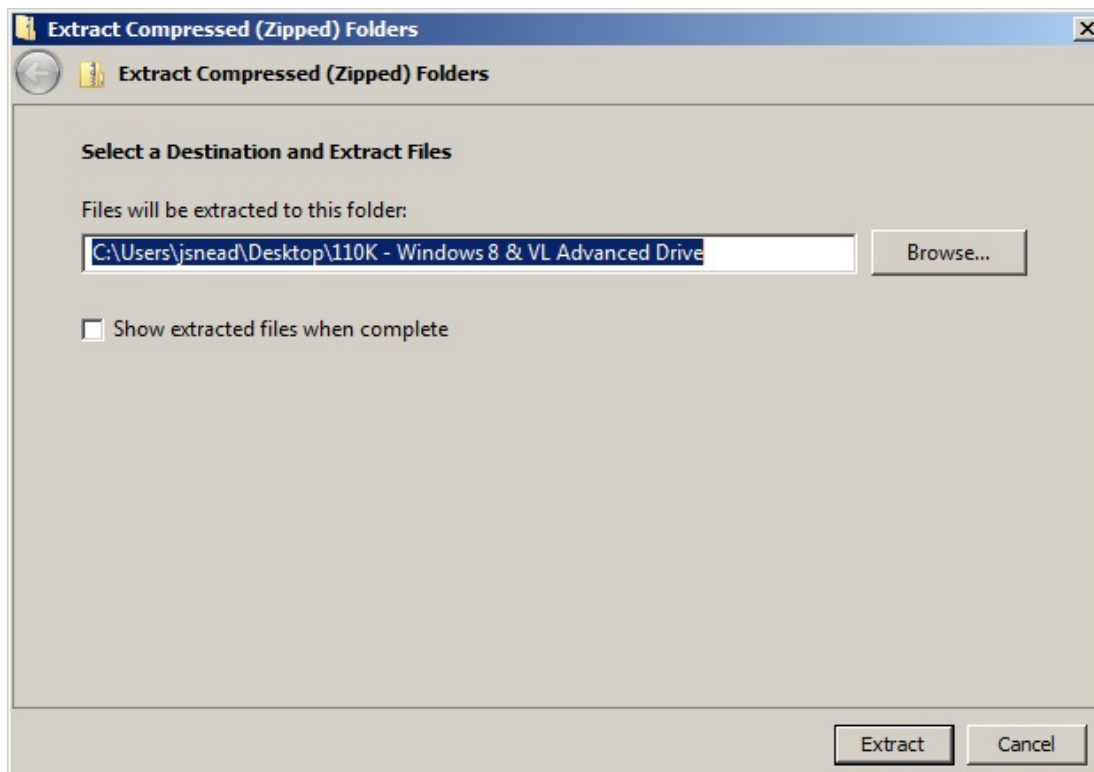
Step 1 – Locate the downloaded ZIP File and right-click on it to extract it:



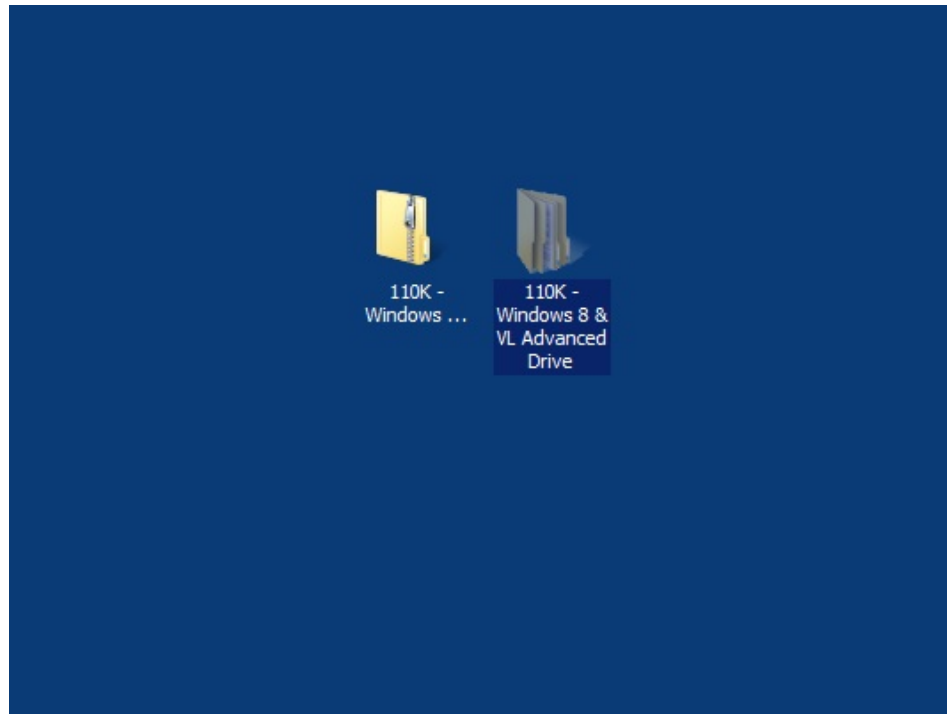


Select “Extract All” to bring up the wizard to unzip the file. If you don’t have a built-in extraction utility such as this, you will need to use WinZip or other extraction utility to unzip the ZIP file.

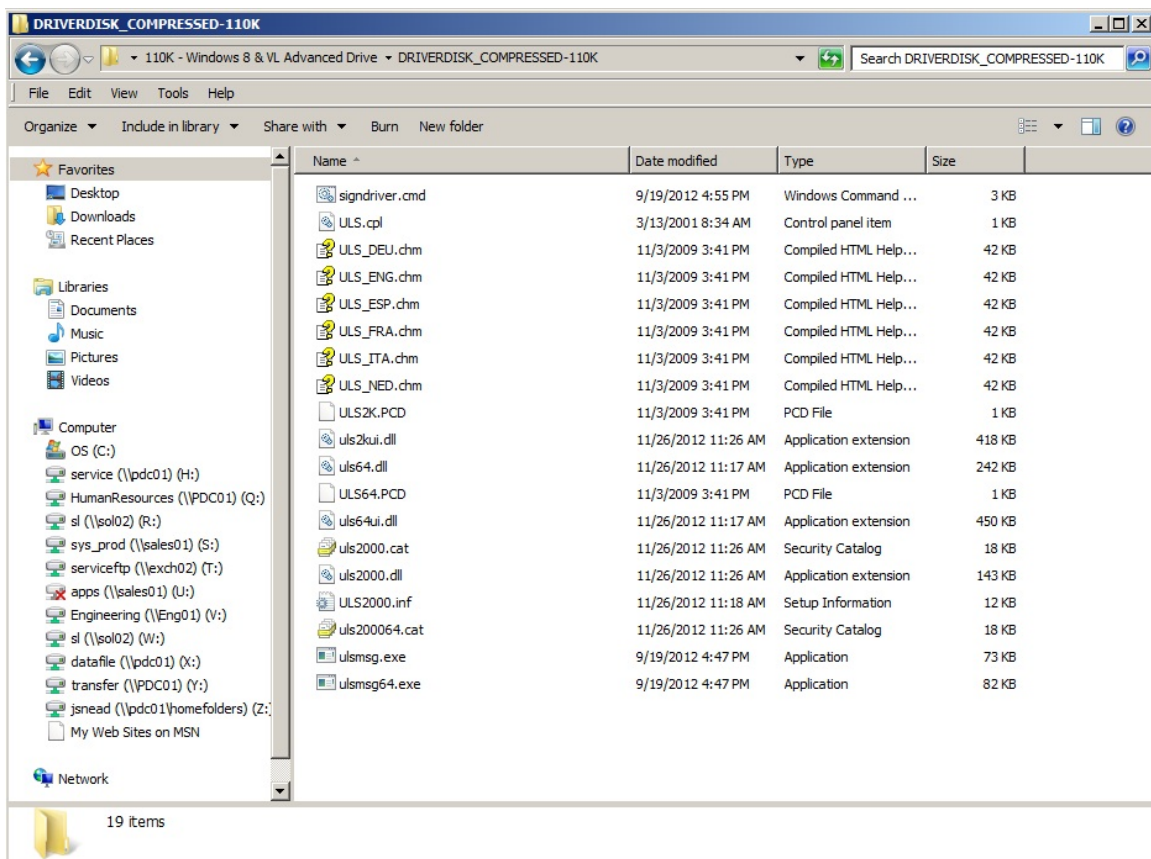
Step 2 – Follow through the default steps to extract the ZIP folder to your desktop (or other place you can easily find on your computer):



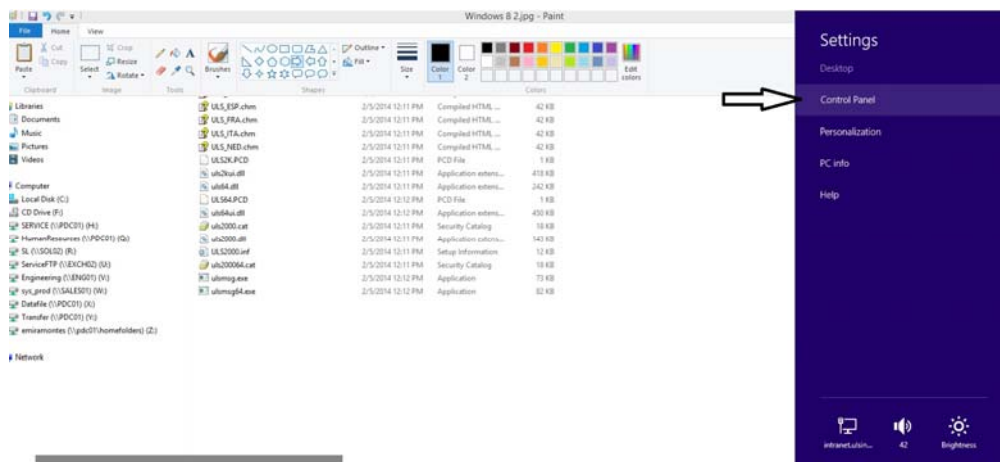
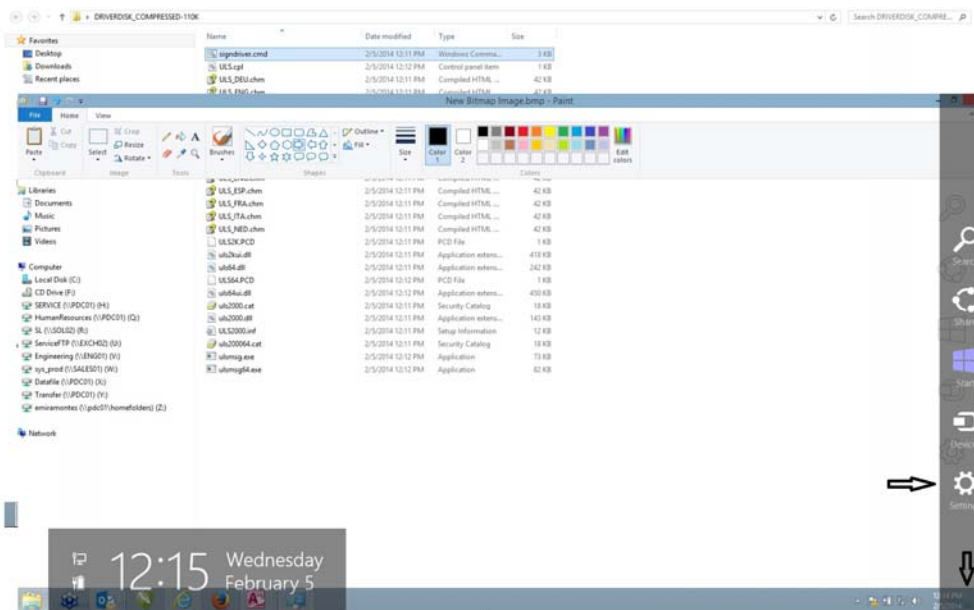
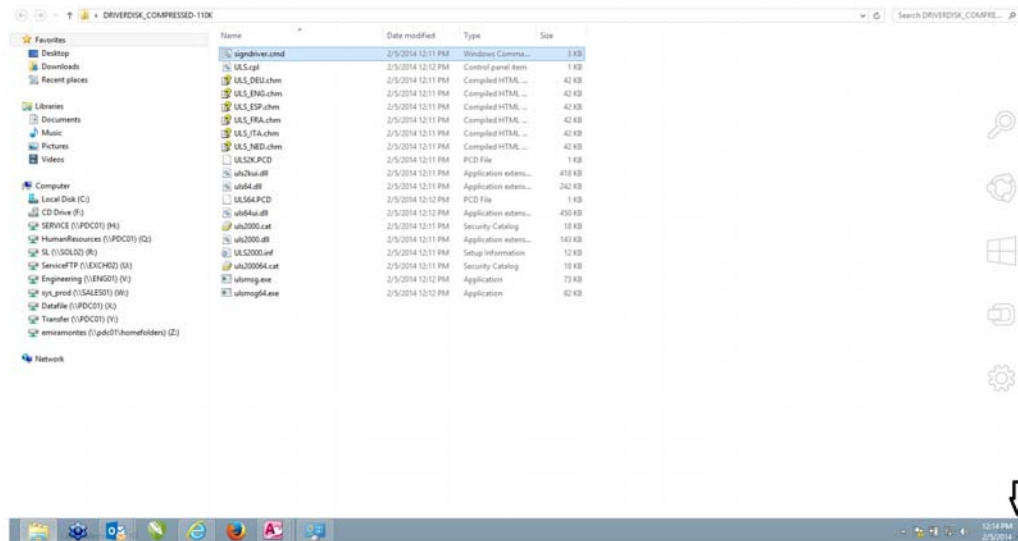
When the extraction wizard closes, you should see the extracted folder appear on your desktop named “110K - Windows 8 & VL Advanced Driver” (The actual driver version may change over time but as of February 2014, the 110K is the correct driver for Windows 8 for usage on MVX systems & VL Advanced Driver):



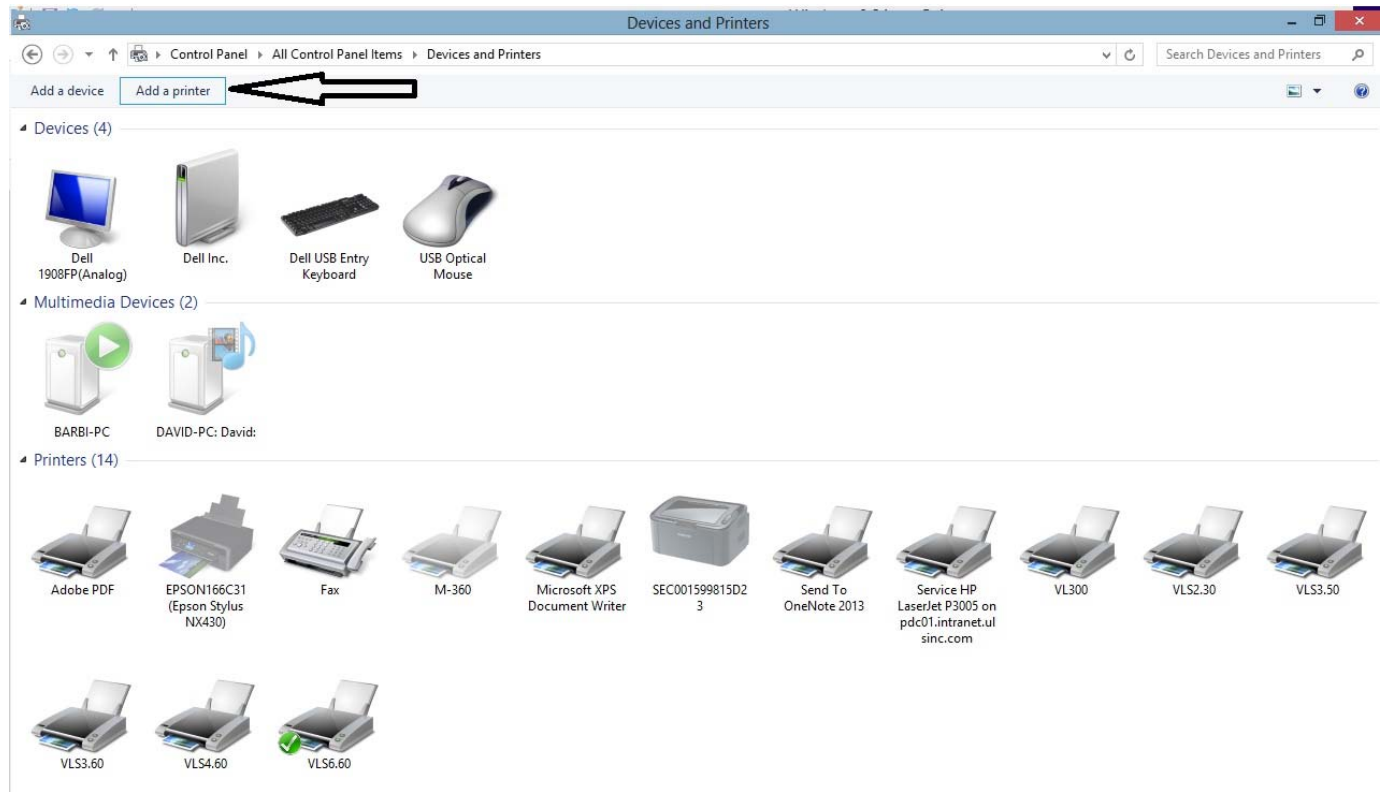
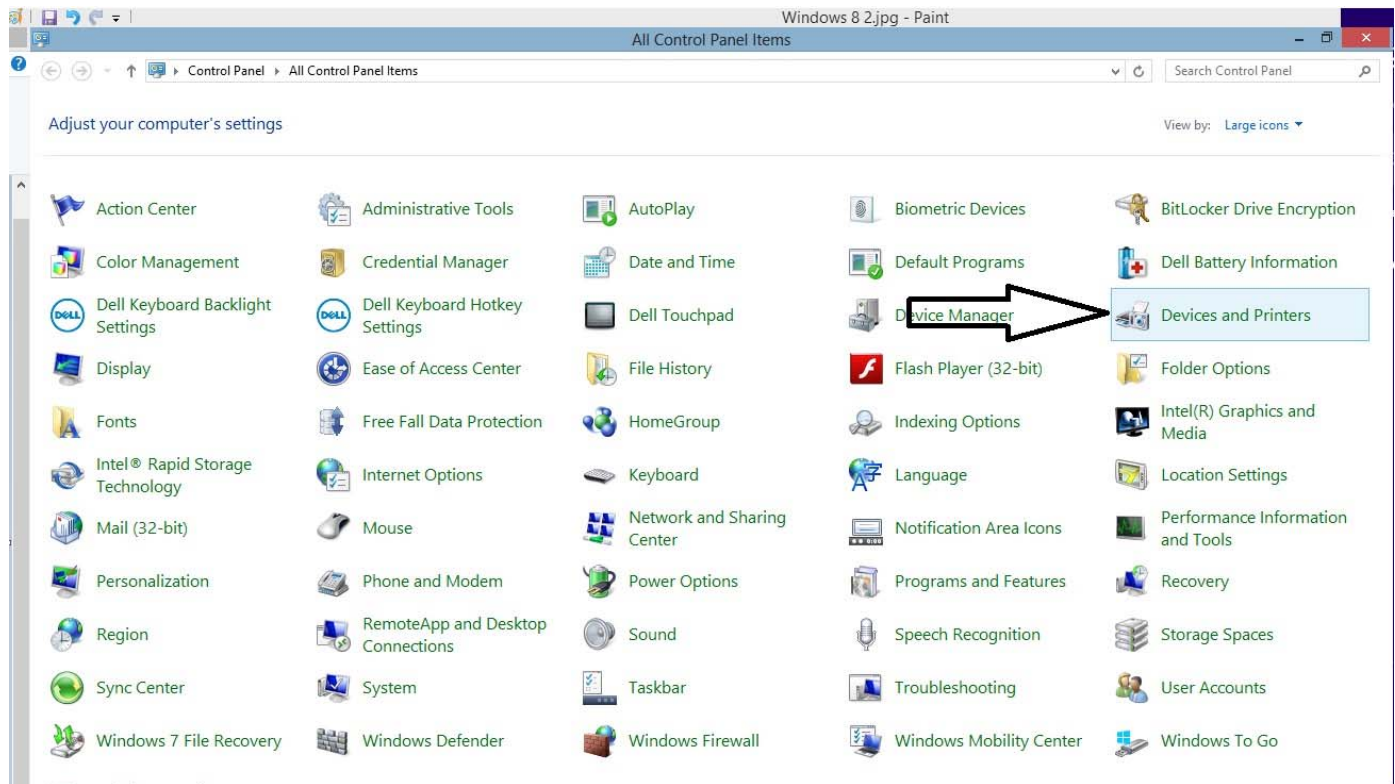
Double-Click on this folder to see the contents of the folder:



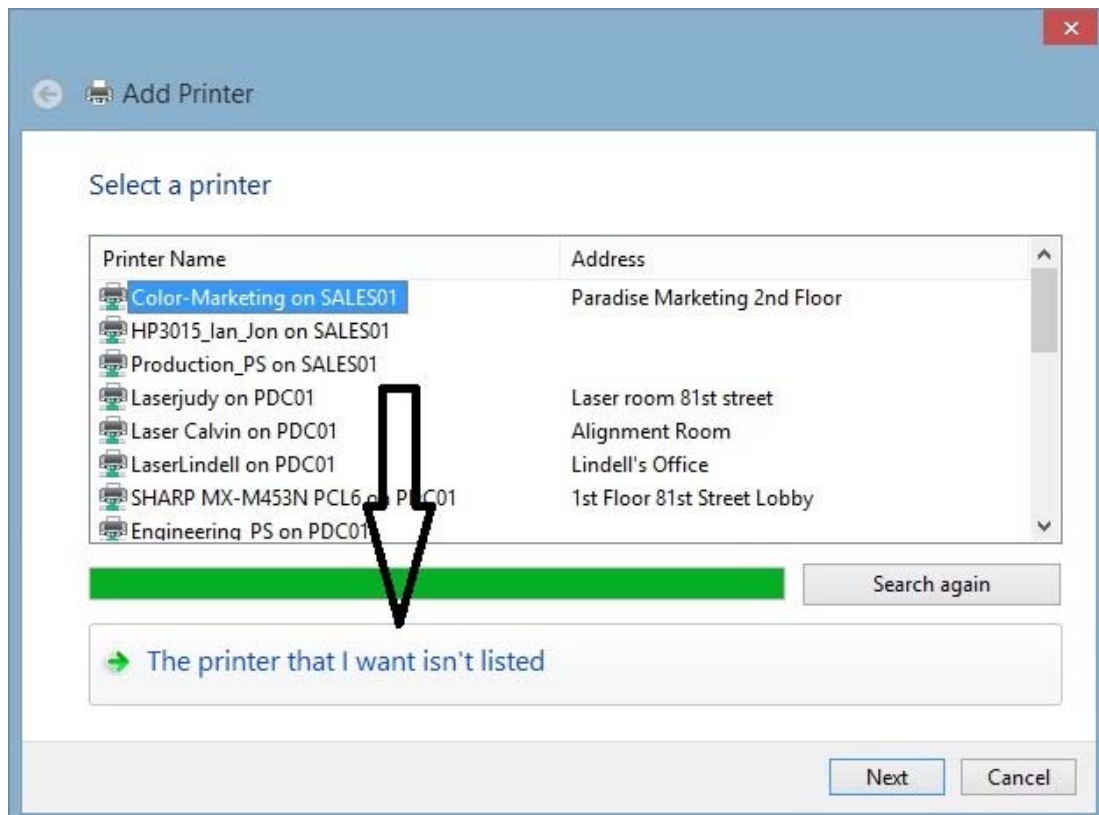
Step 3 – Navigate to the Devices and Printers folder to start the printer installation wizard. Hover your mouse over the bottom right corner of the desktop to get the fly out menu from the right side of the desktop. Next click on Settings, then Control Panel:



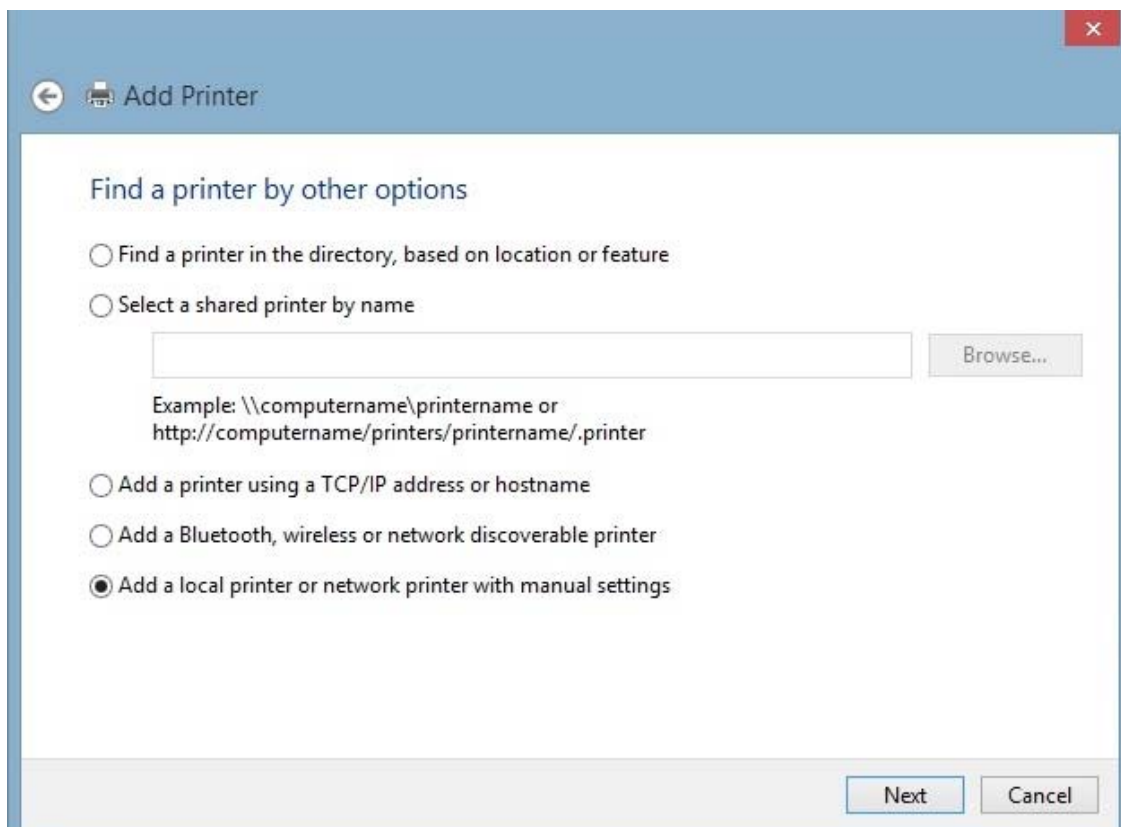
When the Control Panel opens, click on Devices and Printers. After the Devices and Printers window opens, click on the **Add a printer** button in the top left corner:



Step 4 – The **Add Printer Wizard** starts, click on the **The printer I want isn't listed** button and click Next:



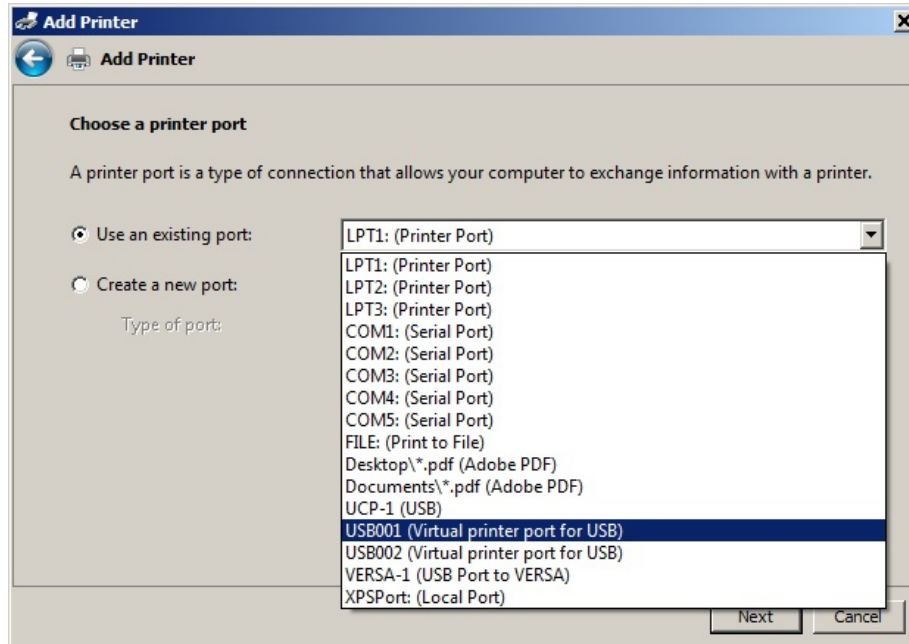
Next, select **Add a local printer or network printer with manual settings** and click Next:



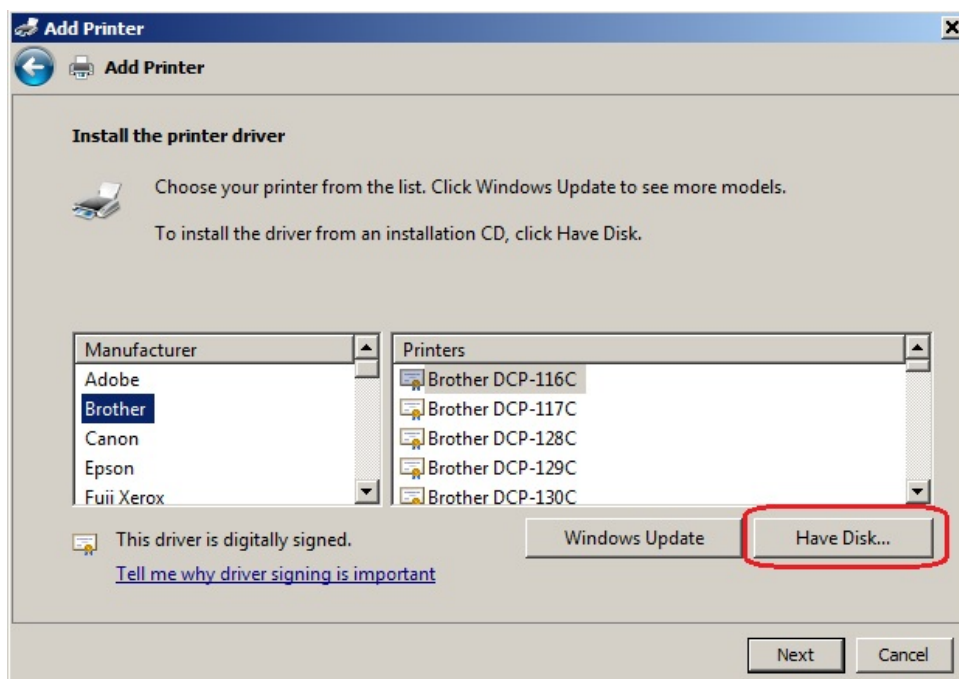
NOTE ! – The rest of this procedure will follow exactly the same steps as with a Windows 7 computer. For this reason, some screen shots may look different but the procedure is the same.

Step 5 – Select the correct port. If you will be using a USB to Parallel cable to connect the computer to the engraver, please connect the cable now and then power on the engraver. This will create a virtual USB port that will be required to install the driver correctly.

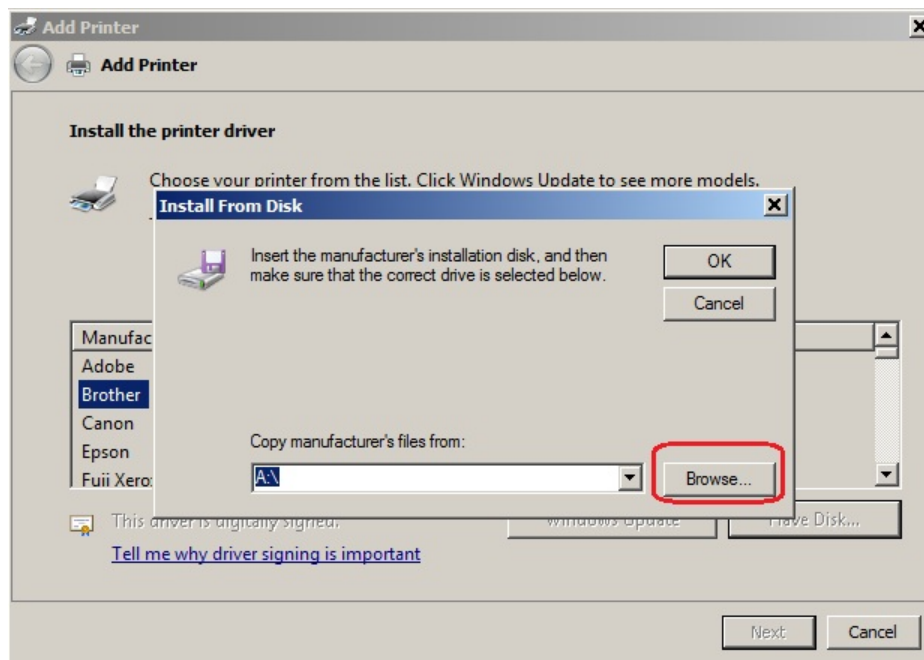
In this example, I am installing a V Class on a Windows 8 computer that is connected with a Parallel to USB cable. If your cable is a parallel to parallel cable, you will need to select an LPT port, usually LPT1. If your cable is a parallel to USB cable, you will need to select a USB00 port, usually USB001. After the correct port selection is made, click **Next:**



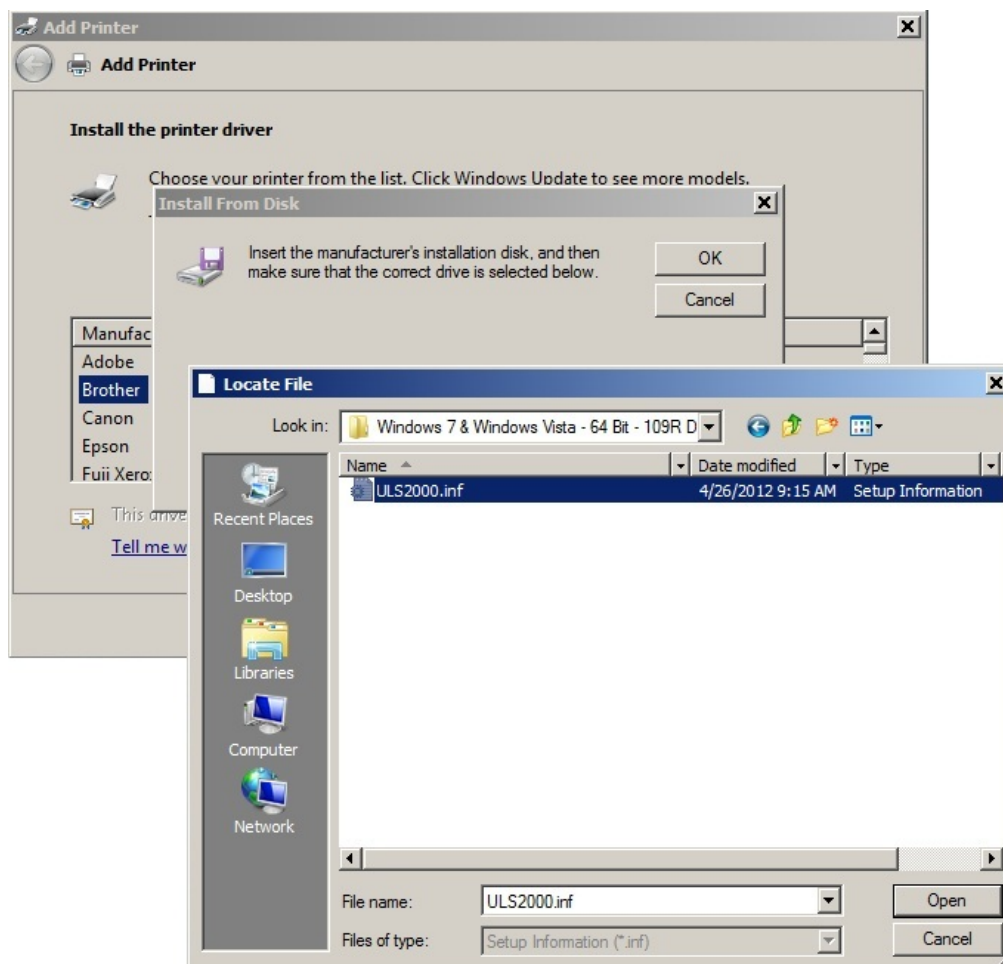
Step 6 – Click the **Have Disk button:**



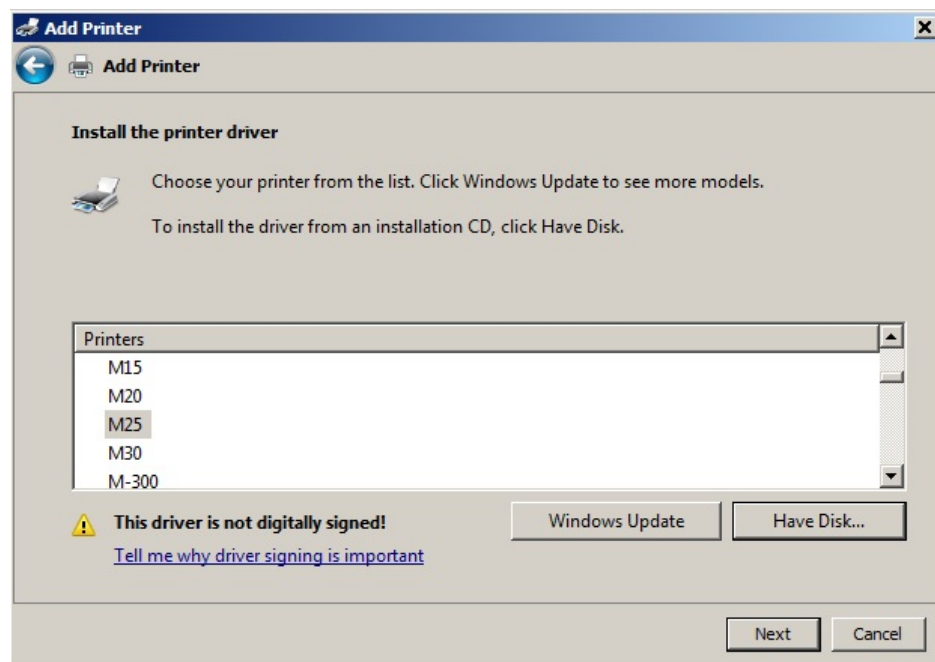
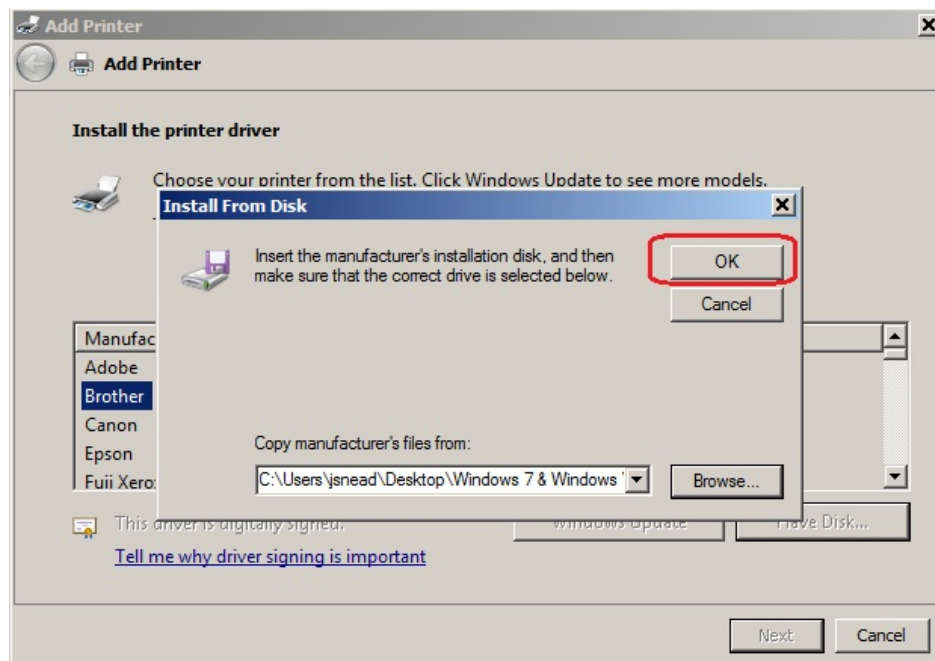
Step 7 – An **Install From Disk** window opens, click on the **Browse** button:



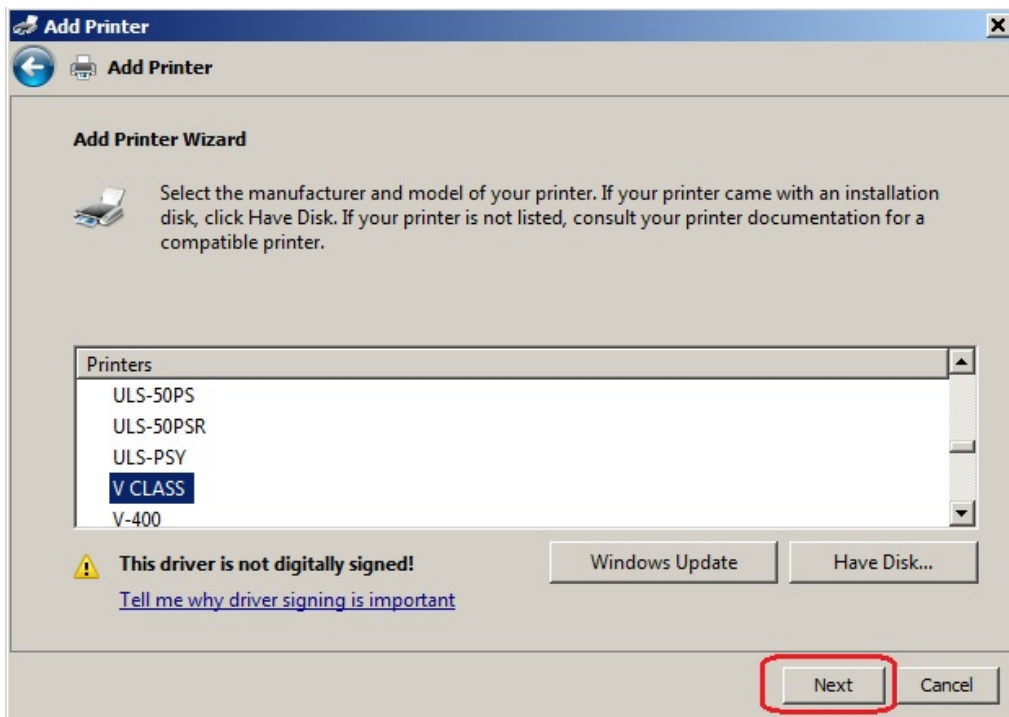
Step 8 – The **Locate File** window opens. Use this window to navigate to the driver folder that you previously unzipped. Inside that folder, you will see a file named **“ULS2000.inf”** (the .inf extension may be hidden but this is not a problem. **Double-Click** on the **ULS2000.inf** file:



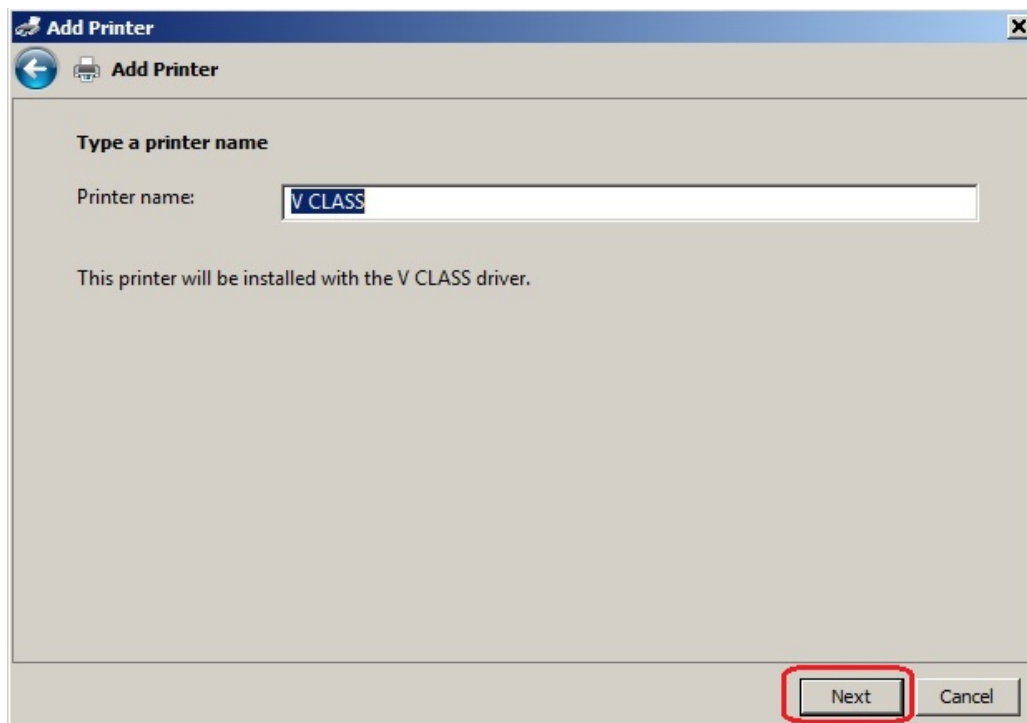
Step 9 – After the ULS2000.inf file is clicked on, the **Locate File** window will disappear leaving only the **Install From Disk** window and the **Add Printer Wizard** window. On the **Install From Disk** window, click **OK** and the **Install From Disk** window will close leaving only the **Add Printer Wizard** window:



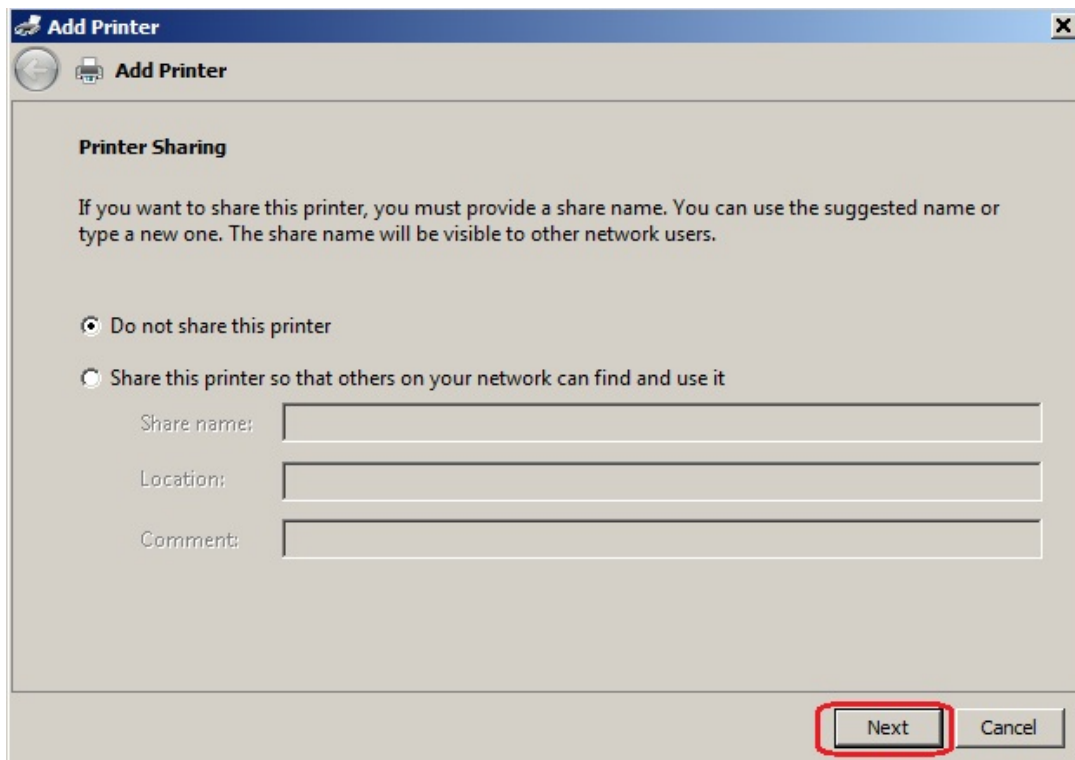
Step 10 – On the **Add Printer Wizard** window, scroll through the available list to select the driver you wish to install. In this example, I have selected **V CLASS**. **At this time, make sure you select the correct model driver for your system!** After selecting your driver model, click **Next**:



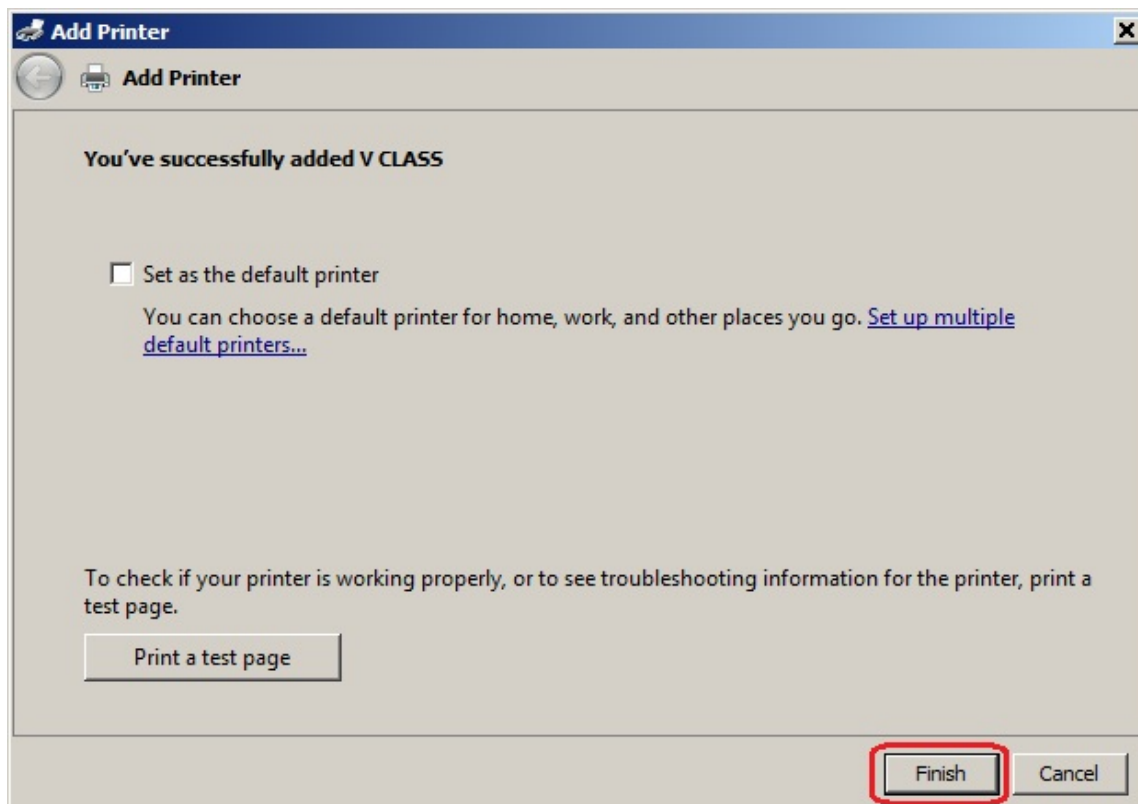
Step 11 – Ensure that the printer name reads the same as the model you select and then click **Next**. It is not necessary to choose the default setting at this point as that can be changed at any time after driver is installed:



Step 12 – Ensure that “**Do not share this printer**” is selected and then click **Next**:



Step 13 – You set the printer at this point to be the default printer. This can be changed at any time later by selecting the default printer in the Devices & Printers folder. Click **Finish** to complete the install:



Step 14 – Done! The Devices & Printers folder will now show the **V Class** as an available printer:

